

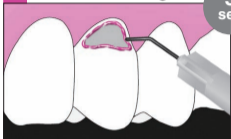
TOKUYAMA EE-BOND

Store under
refrigeration (0-10°C)

 Tokuyama Dental

1 Enamel Etching

5
sec



Apply TOKUYAMA ETCHING GEL HV only to uncut enamel surrounding margin of prepared cavity and wait for 5 sec

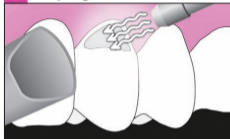
2 Rinse

5
plus
sec



Rinse the etched surface thoroughly (at least 5 sec) with water

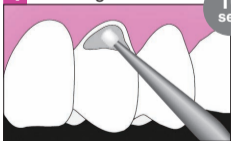
3 Drying



Apply mild air to dry

4 Bonding

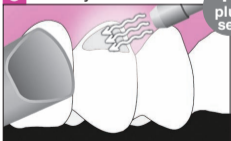
10
sec



Apply TOKUYAMA EE-BOND and wait for 10 sec

5 Air Dry

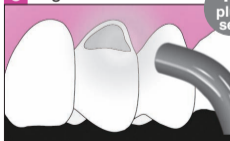
10
plus
sec



Apply weak air for 5 sec
→ mild air for 5+sec

6 Light Cure

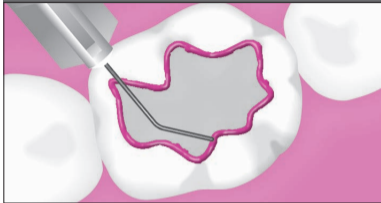
10
plus
sec



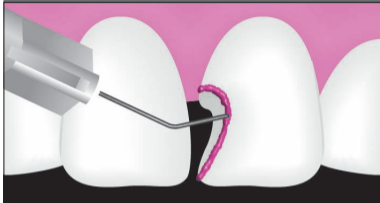
Light cure for 10+sec

Enamel Etching Model Cases

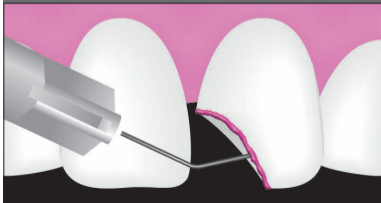
Class I , II



Class III



Class IV



Direct Veneer

