



LUXURY RESTORATIONS

Introducing the next generation *ESTELITE Sigma Quick...* PALFIQUE LX5. Delivering lifelike aesthetic restorations, infused with our Supra-Nano spherical fillers, that was engineered by Tokuyama Dental. Tokuyama Dental's composite resin is recognized world-wide, and features outstanding polishability, wide shade matching range and high wear resistance. PALFIQUE LX5 can meet everything in your practice.

RESIN-BASED DENTAL RESTORATIVE MATERIAL

PALFIQUE LX5



BENEFITS

- Quick curing time - 10 sec. with a halogen light ($\geq 400\text{mW/cm}^2$)
- Extended working time - 90 sec. under ambient light (10,000 lx)
- Outstanding polishability
- High gloss retention over time
- Wide shade matching range (chameleon effect)
- High wear resistance
- Less wear to opposing teeth
- Low shrinkage
- Good radiopacity
- Available in 20 shades

CLINICAL CASES

CLASS II



Before



After

Case courtesy of Hirofumi Tashiro, D.D.S., Ph.D.

CLASS IV



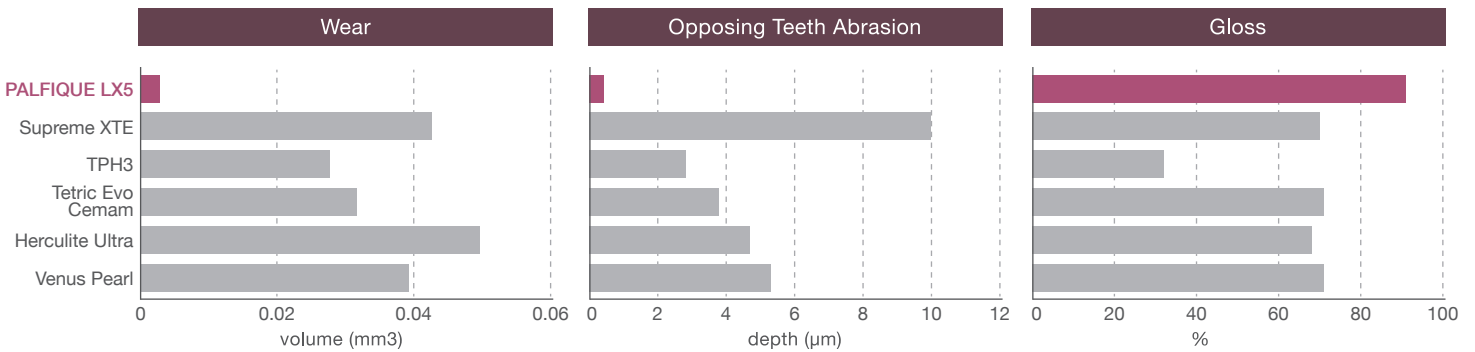
Before



After

Case courtesy of Tomohiro Takagaki, D.D.S., Ph.D.

EXCELLENT PHYSICAL PROPERTIES

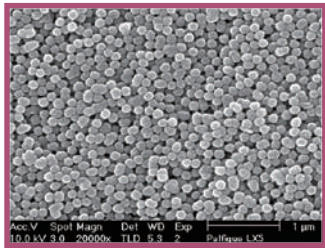


** Source: Tokuyama Dental R&D
* Not a registered trademark of Tokuyama Dental

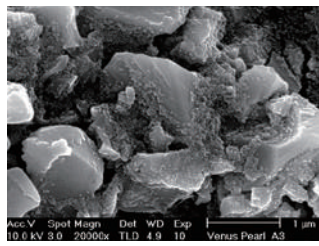
SUPERIOR & LONG LASTING GLOSS

The Supra-Nano Spherical fillers in PALIFIQUE LX5 provide a very smooth surface for a superior shine, and high gloss retention.

FILLER SEM IMAGES

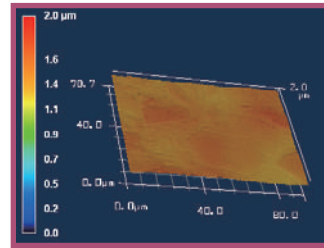


PALIFIQUE LX5

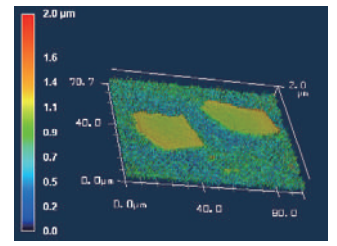


Venus Pearl

GLOSS RETENTION



PALIFIQUE LX5



Venus Pearl

PRODUCT PACKAGES AVAILABLE

PALIFIQUE LX5 Kit

PALIFIQUE LX5 SYRINGE SYSTEM KIT

Contents: 1 syringe (3.8g) of each shade: A1, A2, A3, A3.5, OA3, OPA2;
1 syringe Estelite Flow Quick (1.8g) of each shade: A2, A3, OA3, 27 tips
1 bottle Bond Force (5ml), 1 dispensing well, 50 applicators; shade guide

PALIFIQUE LX5 3 SYRINGE KIT

Contents: 1 syringe (3.8g) of each shade: A2, A3, OA3



PALIFIQUE LX5 Refill

PALIFIQUE LX5 SYRINGE REFILL

Contents: 1 syringe (3.8g)

Available shades: A1, A2, A3, A3.5 A4, A5, B1, B2, B3, B4, C1, C2, C3, OA1, OA2, OA3, OPA2, BW (Bleach White), WE (White Enamel), CE (Clear Enamel)

PALIFIQUE LX5 PLT REFILL

Contents: 20 PLTs (0.2g each)

Available shades: A1, A2, A3, A3.5 A4, A5, B1, B2, B3, B4, C1, C2, C3, OA1, OA2, OA3, OPA2, BW (Bleach White), WE (White Enamel), CE (Clear Enamel)

Specifications are subject to change without notice based on Manufacturers discretion.

Manufactured by
Tokuyama Dental Corporation

38-9, Taitou 1-chome, Taitou-ku, Tokyo, Japan
TEL: +81-3-3835-2261 FAX: +81-3-3835-7224
Email: export@tokuyama-dental.co.jp
URL: www.tokuyama-dental.com