

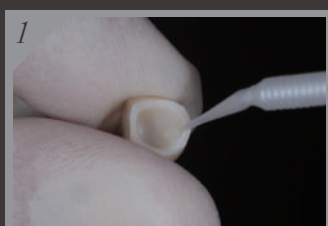
A Self-Etching & Dual-Cured Adhesive Resin Cement

ESTECEM

- Easy and Reliable Adhesion
- Superior Esthetics
- Ease of Use



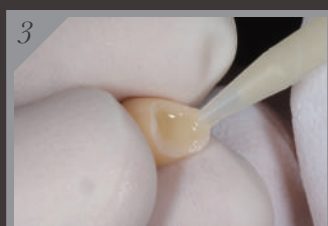
Procedure



1 Restoration pretreatment with TOKUYAMA UNIVERSAL PRIMER



2 Tooth pretreatment with ESTELINK



3 Apply the mixed PASTE to the surface of the restoration



4 Place the restoration on the tooth with firm pressure



5 Light-cure the excess PASTE with a dental curing light for 2 to 4 seconds



6 Remove the excess PASTE



7 Final PASTE hardening by light curing for 20 seconds or more

※ Light-cure along margins for 20 seconds or more in case of non translucent restoration



8 Finished restoration